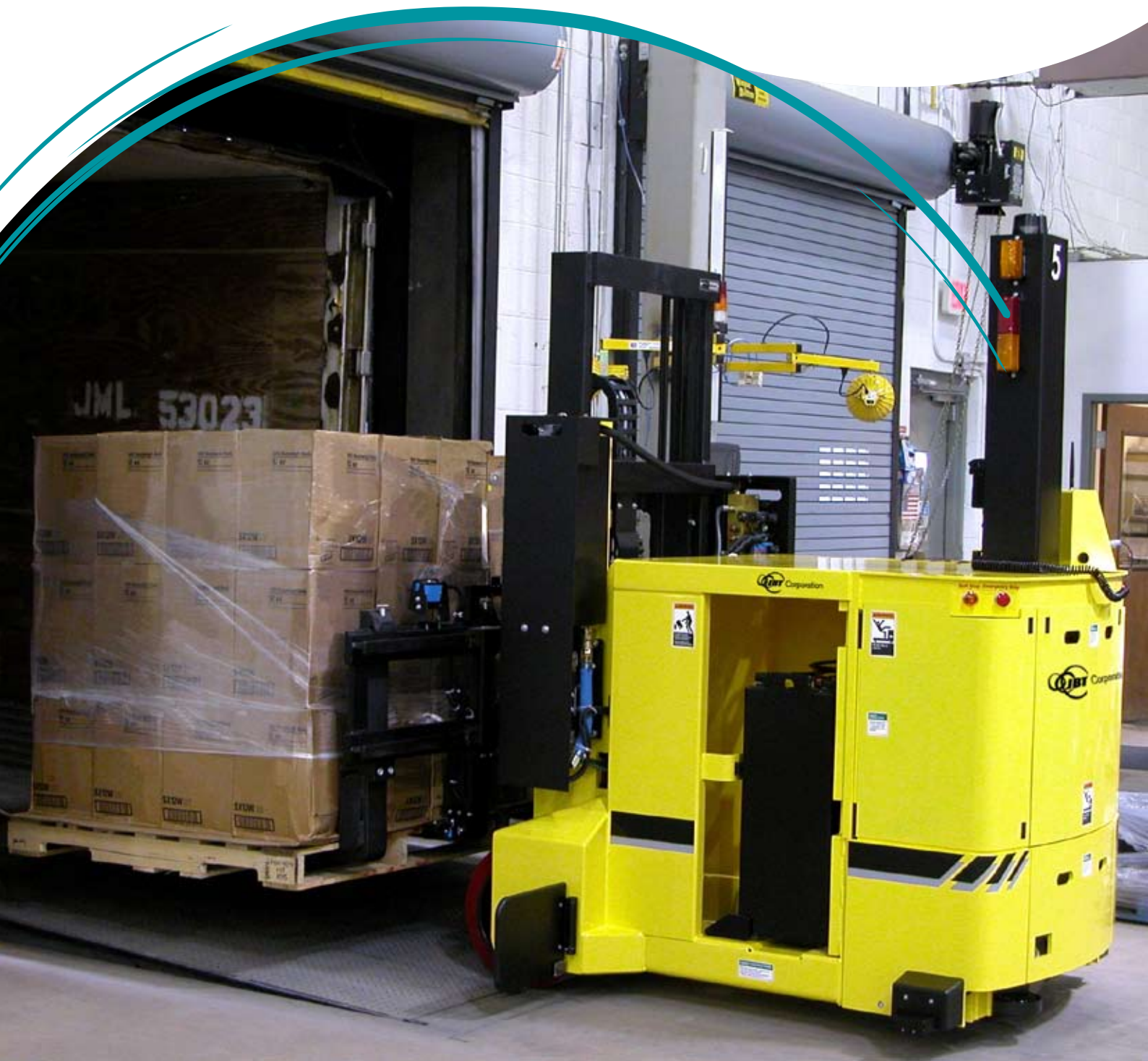


SGV DockPro

Automated Trailer Loading System



How It Works

1 The JBT Corporation SGV DockPro System goes to work when a command to load a trailer is generated. This command can be initiated manually by an operator using a touch screen or PDA, or automatically through an external computer system responsible for scheduling product shipments.



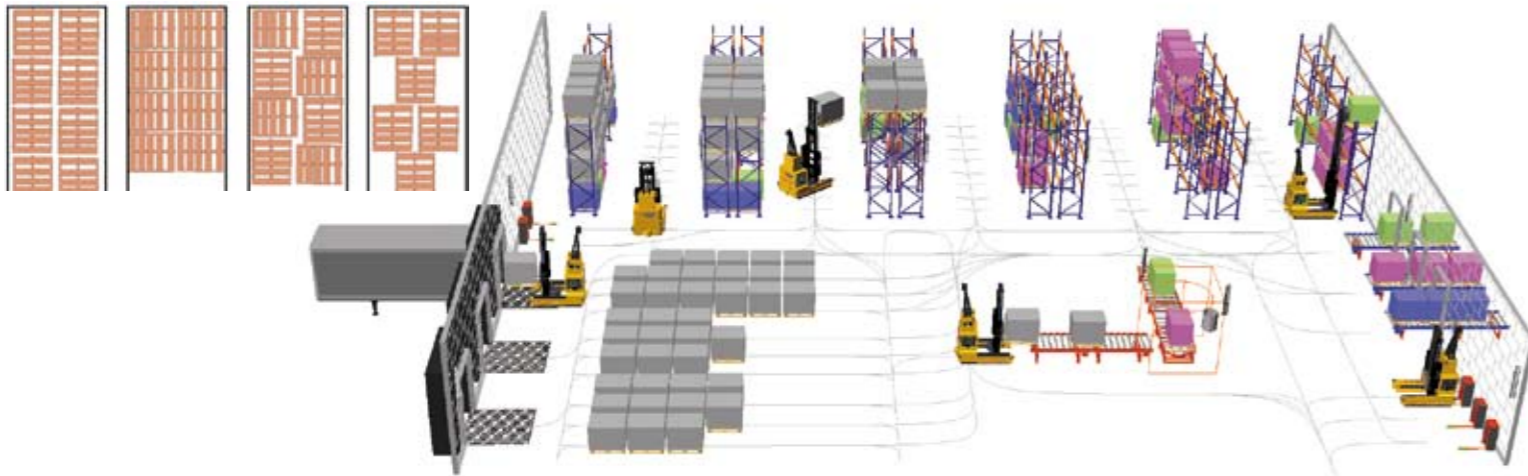
2 The SGV DockPro Host computer receives the schedule of outbound shipments and assigns specific SGV DockPro vehicles to efficiently complete the tasks. The SGV DockPro vehicles can retrieve loads from staging lanes, racking, block-stacked lanes, and conveyors and deliver them into the trailer with no human intervention.



3 SGV DockPro vehicles navigate using laser guidance which allows a unique blend of accuracy, vehicle speed, and flexibility, to easily adapt to changing plant/warehouse conditions. The system tracks all material movement and accommodates multiple trailer loading patterns.



SGV DockPro Accommodates Multiple Trailer Loading Patterns



Vehicle Features & Specifications

Navigational laser updates vehicle position 40 times/second

User friendly color touch screen

Recessed e-stop & start/stop push buttons

Hydraulic lift control for maximum speed

Removable covers for easy access to components

Safety wing provides protection for entire load width

Front safety bumper w/ programmable fields to maximize safety

Side safety bumper for protection during turns

SGV Dock Pro System Benefits

Improved Safety with vehicles which move in a predictable, controlled manner with safety sensors for obstacle detection.

Reduced Labor Costs with fewer people on the loading dock.

Reduced Product Damage with gentle handling of loads.

Reduced Trailer Wait Times with safe, reliable, and timely loading of trailers.

Improved Material Tracking is easy with computer controlled vehicles which communicate with plant controls.

No Plant Modifications or Bulk Conveyors Are Needed and standard over-the-road trailers are loaded without changes to the trailer or loading dock.

| Vehicle Specifications |
|---|
| Load Capacity: 3,800lbs (heavier capacities available) |
| Vehicle Speed: Variable from 20 FPM to 250 FPM |
| Vehicle Weight: With battery 8,725 lbs. |

Operator pendant for manual control

Load detection sensors ensure safe load pick-up and delivery

Single or double load handling capability

Large rear wheels to travel easily over levelers & expansion joints

Rear safety bumper with programmable field to maximize safety

Fork side shift for accurate load positioning

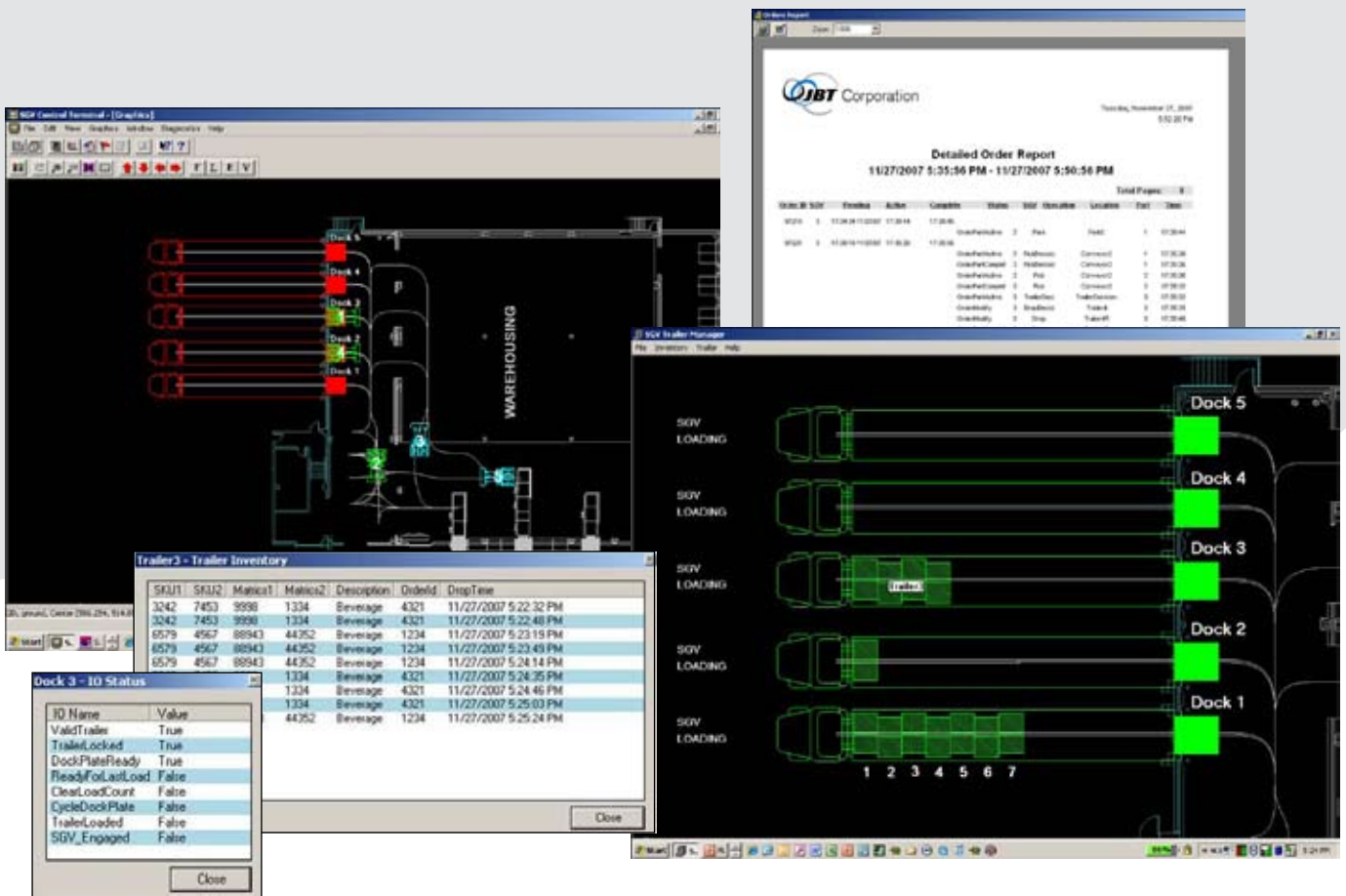
| Vehicle Specifications |
|---|
| Battery Power: 375 AH (8 hours); compartment sized to 750 AH |
| Ground Clearance: 3.5" |
| Stopping Accuracy: +/- 0.375" |

SGV DockPro

Automated Trailer Loading Software

The SGV DockPro software coordinates all activities in the trailer loading process. As a Windows based software tool, it provides all information in a user-friendly, graphical format.

- » Communicates with customer production/logistics software to receive outbound shipment requirements.
- » Monitors entire system in real time including vehicles, dock interlocks, and trailer inventory.
- » Controls and tracks all pallet movement.
- » Report Generator function provides detailed reports on product and system activity.



www.jbtc-agv.com



John Bean Technologies Corp.
400 Highpoint Drive
Chalfont, PA 18914 USA
Phone: 215-822-4600
Fax: 215-822-4553
sgv.sales@jbtc.com

John Bean Technologies SA
106 Bd Heloise
Les Harmoniques
95101 Argenteuil Cedex, France
Phone: +331 399 646 59
Fax: +331 399 646 74
contact@jbtc-agv.fr

John Bean Technologies NV
Breedstraat, 3
B-9100 Sint Niklaas, Belgium
Phone: +32 3 780 1336
Fax: +32 3 777 7955
snt1_sgv@jbtc.com

John Bean Technologies Ltd.
Unit VI Winchester Avenue
Blaby Industrial Park
Blaby Leicester, UK, LE8 4GZ
Phone: +44 116 264 2250
Fax: +44 116 264 2279
uksgvsales@jbtc.com