



Features

Date Installed:	2005
Facility Location:	Los Angeles, CA
Vehicle Type:	ATLIS 3000
Number of Vehicles:	28
Industry Description:	Hospital
Guidance Method:	Laser
Vehicle Lift Capacity:	800 lbs.
Load Description:	Carts of surgical supplies, dietary, linens, waste & pharmaceuticals
Battery Charging Method:	Opportunity
Host Software:	SGV Manager w/ Hot Back-Up
Throughput:	2175 movements/day
Guidepath Length:	4,000 ft (multiple floors)

System Description:

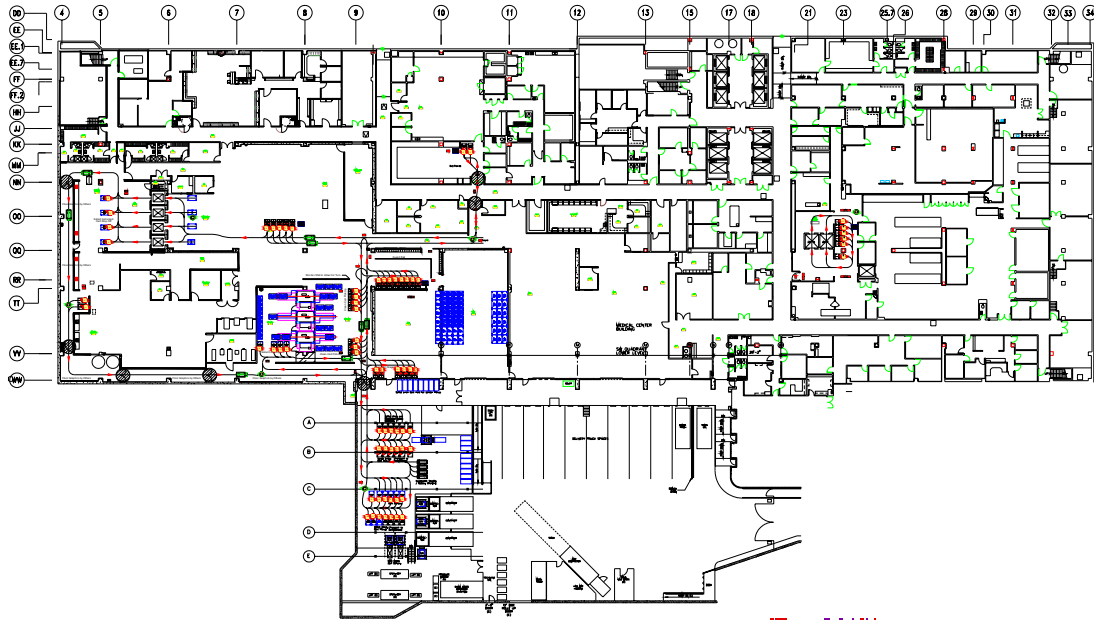
The ATLIS 3000 system transports carts of surgical supplies, dietary, linens, waste, and pharmaceuticals among various operational units & patient floors throughout the hospital. The SGV Manager coordinates all delivery activities within the system. Touch screen terminals which communicate with the SGV Manager through an RF Network are used to allow employees to make requests for the system to transport carts. The ATLIS vehicles interface with dedicated elevators in the hospital to allow them to transport supplies to multiple floors of the hospital. Each cart transported by the system has a unique barcode on it, and vehicles are equipped with an onboard barcode scanner to allow them to identify the cart type and number. The ATLIS 3000 System completes 2,175 movements per day, which are all recorded by the SGV Manager.



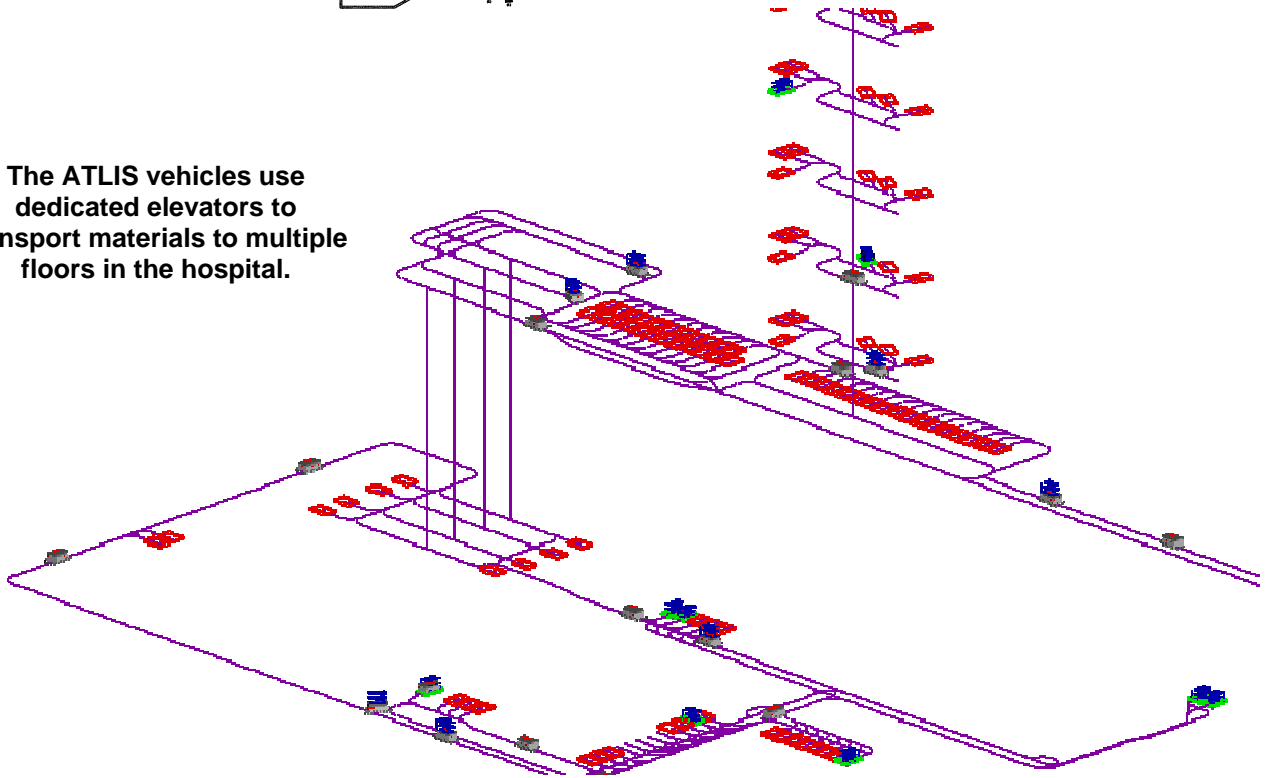
Benefits:

- Reduces labor and inventory costs
- Improves personnel safety
- Improves inventory tracking and timeliness of material delivery
- Improves patient care by freeing hospital staff, allowing them to spend more time in direct contact with patients
- System flexibility allows system administrators to optimize system response time and system layout

Facility Layout



The ATLAS vehicles use dedicated elevators to transport materials to multiple floors in the hospital.



www.jbtc-agv.com



John Bean Technologies Corp.
 400 Highpoint Drive
 Chalfont, PA 18914 USA
 Phone: 215-822-4600
 Fax: 215-822-4553
sgv.sales@jbt.com

John Bean Technologies SA
 106 Bd Heloise
 Les Harmoniques
 95101 Argenteuil Cedex, France
 Phone: +331 399 646 59
 Fax: +331 399 646 74
contact@jbt-agv.fr

John Bean Technologies NV
 Bredstraat, 3
 B-9100 Sint Niklaas, Belgium
 Phone: +32 3 780 1336
 Fax: +32 3 777 7955
snt1_sgv@jbt.com

John Bean Technologies Ltd.
 Unit VI Winchester Avenue
 Blaby Industrial Park
 Blaby Leicester, UK, LE8 4GZ
 Phone: +44 116 264 2250
 Fax: +44 116 264 2279
uksales@jbt.com